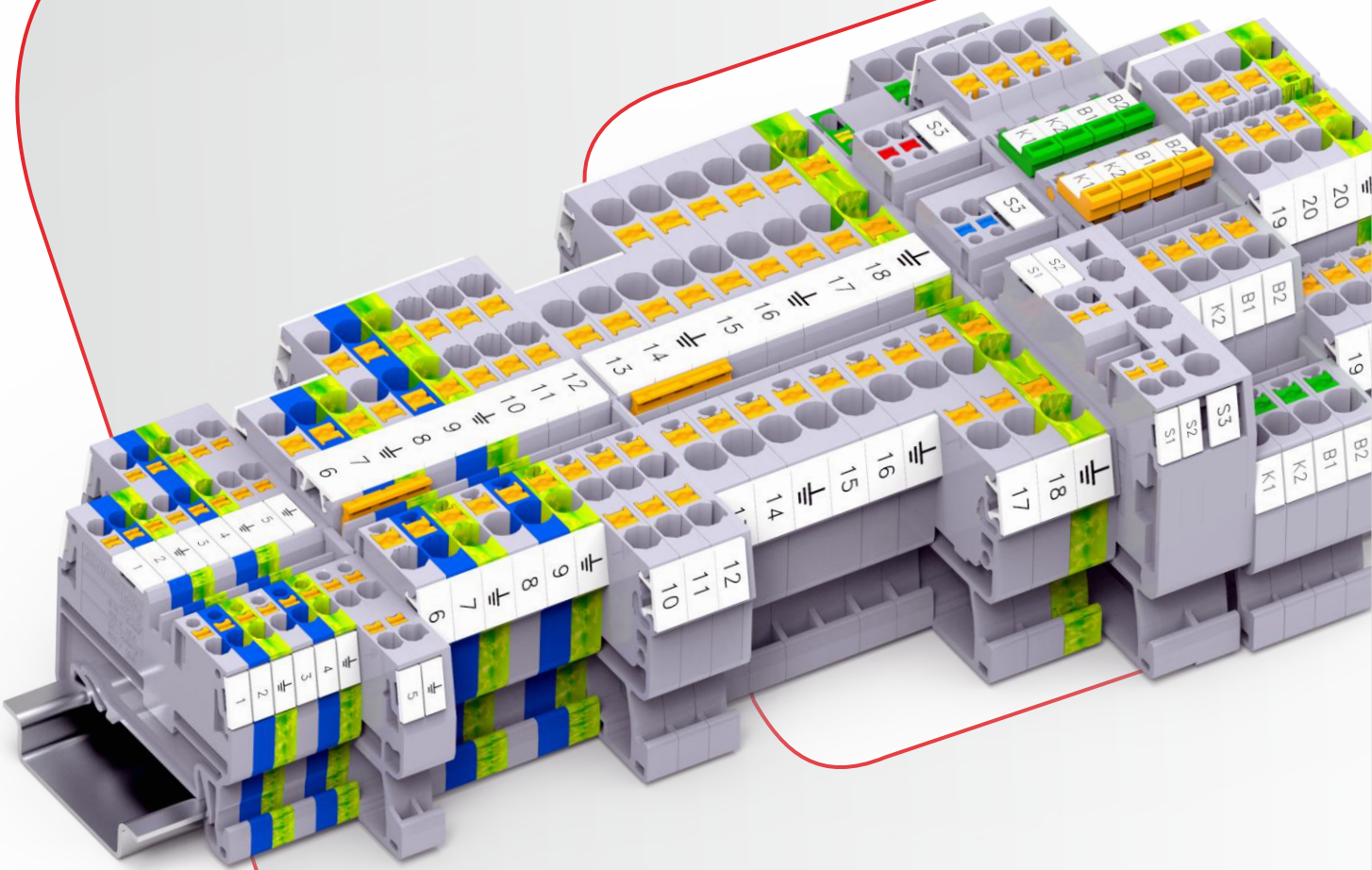


# COMPANY PROFILE



# INTRODUCTION

Established in 1978, Connectwell is the leading manufacturer of Terminal Blocks in India. This superior range of Terminal Blocks is complimented by a large range of Interfacing solutions and SMPS (Switched-Mode Power Supplies).

Connectwell's wide spread sales network is well complemented by excellent infrastructure dedicated to processes like Product Design, Plastic Injection Moulding, Compression Moulding, Sheet Metal Processing, Tool Design & Manufacturing.

More than four decades of incessant dedication and commitment have made Connectwell a synonym for

... THE RIGHT CONNECTION



## VISION & MISSION

Connectwell is committed to provide safe, reliable and efficient control & connection solutions in line with ever changing technology requirements. We shall...

Empower domestic and global customers with products of the highest quality standards, with a competitive edge and at superior service levels. Create a work culture that encourages individual growth, team spirit and creativity; helping us overcome challenges and attain goals. Deploy fair & ethical business practices for the growth of our vendors and maximize returns to our stakeholders. Contribute towards the welfare of our community and follow environment friendly practices.

Connectwell is dedicated to achieve customer satisfaction by, supplying the Right Product, at the Right Time and at the Right Cost.

## QUALITY & SYSTEMS

At Connectwell we endeavour to keep evolving our systems in line with the latest standards and technology.

In addition to being an ISO 9001:2015, ISO 14001:2015, ISO 45001:2018 certified organization, all our business processes are mapped into various internal and customer facing IT systems, ranging from a world class ERP, CRM & PLM systems to extremely user friendly customer portal, product configurators and product website.

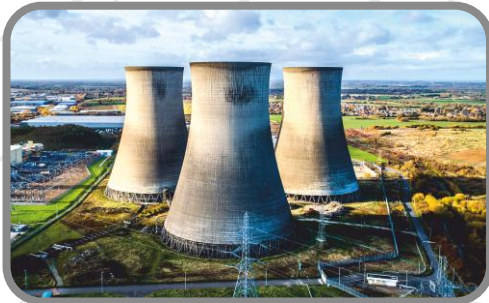
Our quality control laboratory has been approved for 'Witness Test Data Program' by Underwriters Laboratories (UL). This ensures that the quality testing carried out by our laboratory is not only accurate but also acceptable to the most stringent third party product testing organizations.

Connectwell products carry global certifications / approvals from IEC, UL, CSA, VDE, LR, BV, UKCA for industrial application and ATEX, IECEX, AEx, INMETRO, EAC, CCC for Hazloc applications.



# INDUSTRIES WE SERVE

**POWER**



**OIL & GAS**



**MACHINERY AND  
FACTORY AUTOMATION**



**TRANSPORTATION**



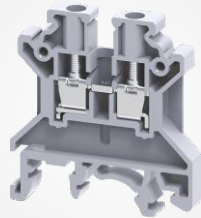
**BUILDING  
INFRASTRUCTURES**



**CONTINUOUS PROCESS  
AUTOMATION**

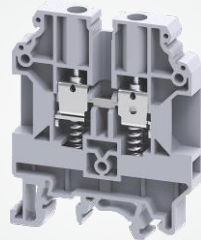
# 5 TERMINAL BLOCK Connection Technologies

## SCREW CLAMP CONNECTION



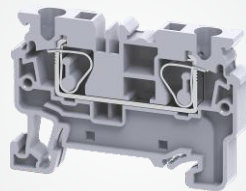
Technical Details :	
Wire Size	0.2 - 120 mm <sup>2</sup> / 22 - 250 KCMIL
Voltage	1000 V
Current	Upto 269 A
Torque	0.4 - 6 Nm / 4.5 - 90 lb.In

## SPRING LOADED CONNECTION



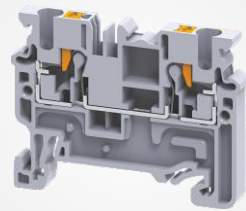
Technical Details :	
Wire Size	0.2 - 10 mm <sup>2</sup> / 22 - 6 AWG
Voltage	1000 V
Current	Upto 65 A
Torque	0.5 - 1.2 Nm / 7 - 14 lb.In

## SPRING CLAMP CONNECTION



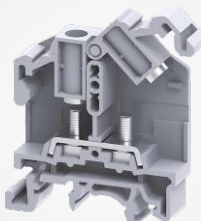
Technical Details :	
Wire Size	0.2 - 35 mm <sup>2</sup> / 24 - 2 AWG
Voltage	1000 V
Current	Upto 125 A
Rated Impulse Voltage	4 - 8 KV

## PUSH-IN CONNECTION



Technical Details :	
Wire Size	0.2 - 10 mm <sup>2</sup> / 24 - 8 AWG
Voltage	1000 V
Current	Upto 57 A
Rated Impulse Voltage	4 - 8 KV

## STUD / BOLT TYPE CONNECTION



Technical Details :	
Wire Size	0.5 - 300 mm <sup>2</sup> / 22 - 600 KCMIL
Voltage	1000 V
Current	Upto 520 A
Rated Impulse Voltage	8 KV

# Classic CTS Series

## Screw Clamp Terminal Blocks

- Fuse Terminal Blocks in 8 mm and 6 mm pitch
- Universal voltage rating of 6-60 V & 110-240 V available for offline indication

Knife Disconnecting Terminal Block for ease of disconnecting electrical circuits

Earthing Terminal Blocks for terminating earthing wires coded yellow-green colour as per industry standards

Sliding type Disconnecting Terminal Block for current transformers & power meters

Auxiliary Terminal Block for providing extra connection point for indicator or contractor application.

Feed Through Terminal Block range upto 120 mm<sup>2</sup> wires

Sliding jumper for CT shorting

Coloured test sockets for insertion of Test Probes

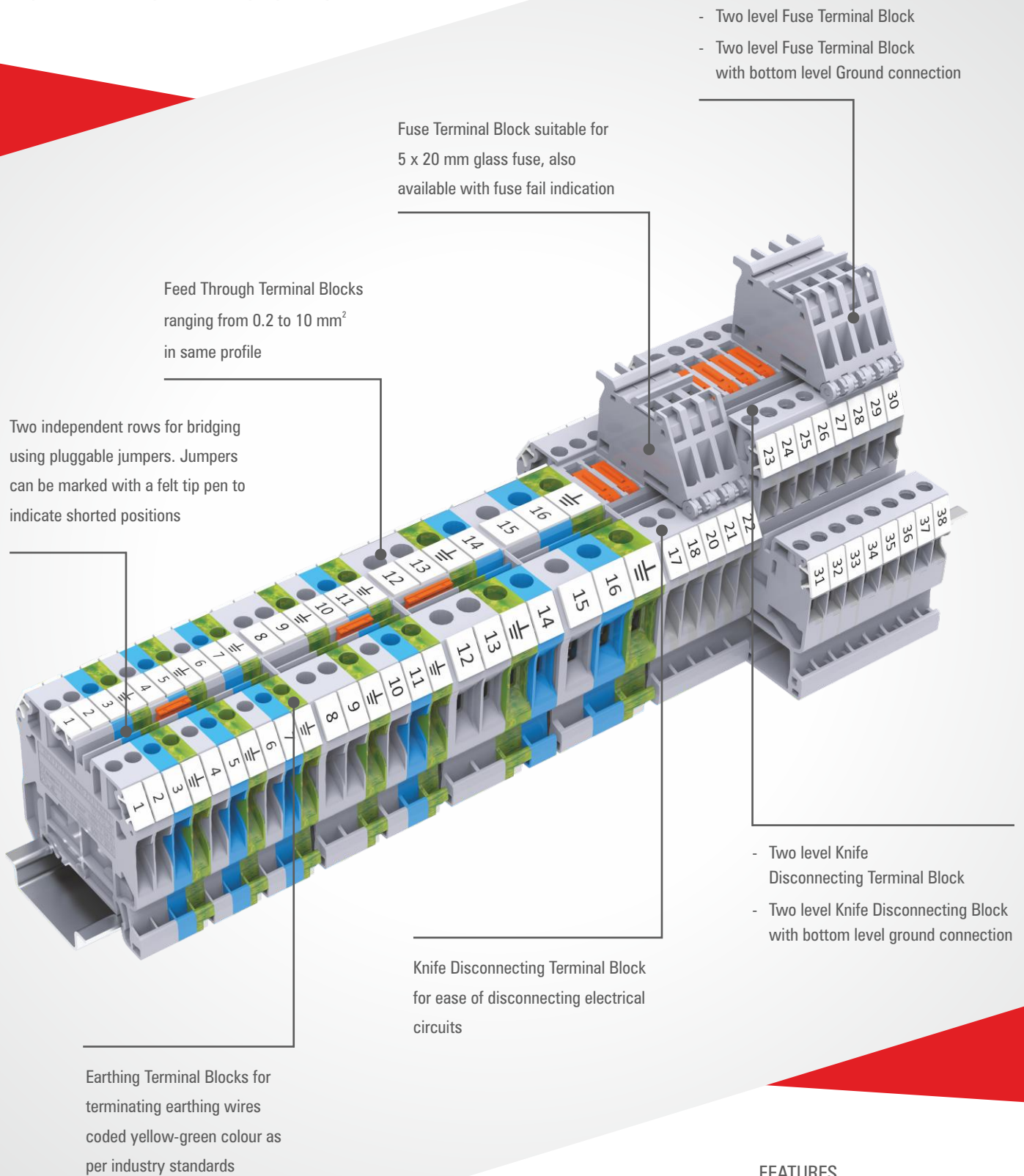
2 Level and 3 Level Terminal Block for high density wiring application

Feed Through Terminal Block for connecting wires as small as 0.2 mm<sup>2</sup>

### FEATURES

- > Connection Reliability
- > Low Contact Resistance
- > High Tightening Torque

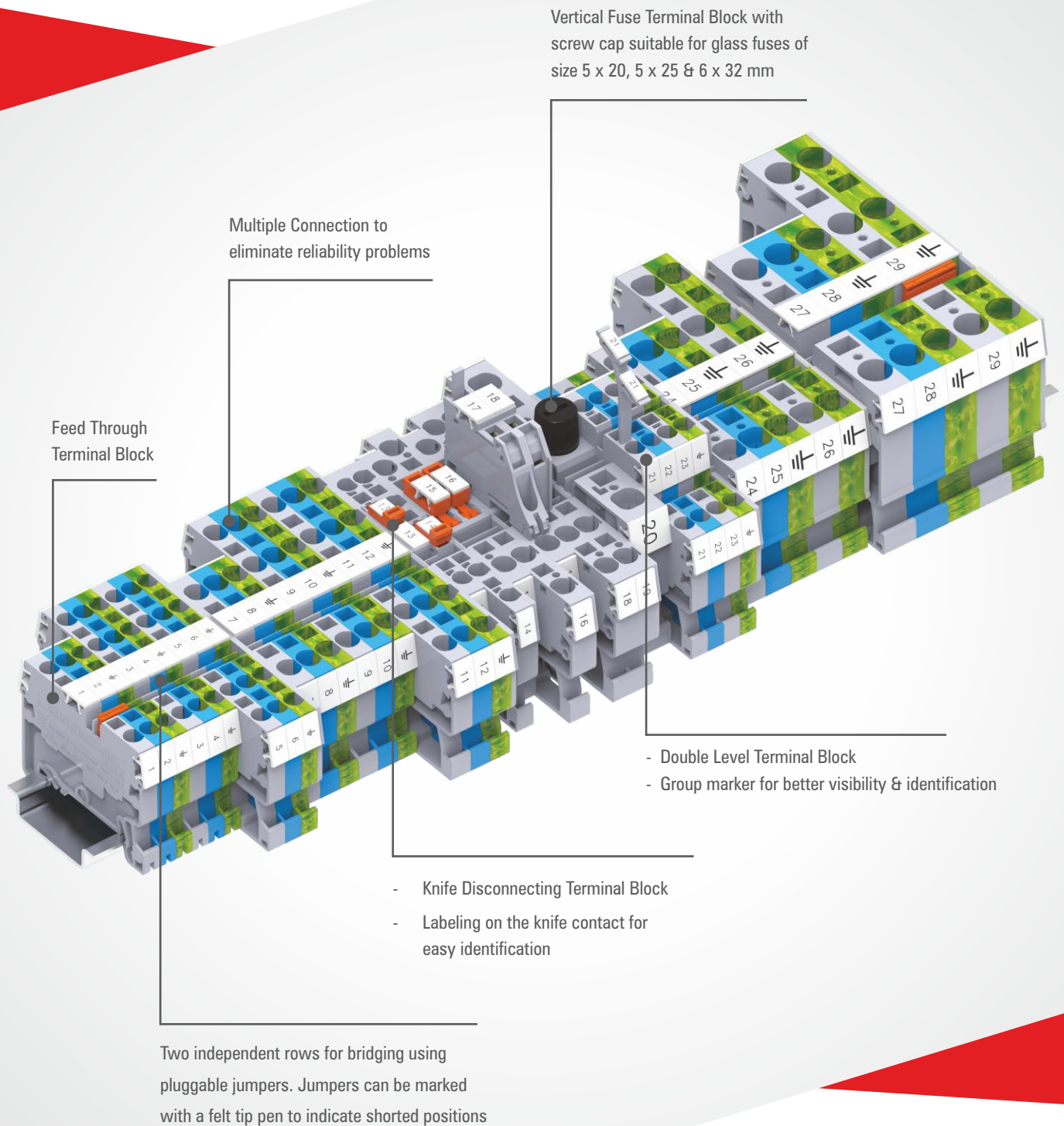
# High Performance CY Series Screw Clamp Terminal Blocks



## FEATURES

- > Same profile
- > V0 Material
- > Twin row pluggable jumpers
- > Ideal for process automation and Oil & Gas applications

# CX Series Spring Clamp Terminal Blocks



Vertical Fuse Terminal Block with screw cap suitable for glass fuses of size 5 x 20, 5 x 25 & 6 x 32 mm

Multiple Connection to eliminate reliability problems

Feed Through Terminal Block

- Double Level Terminal Block
- Group marker for better visibility & identification

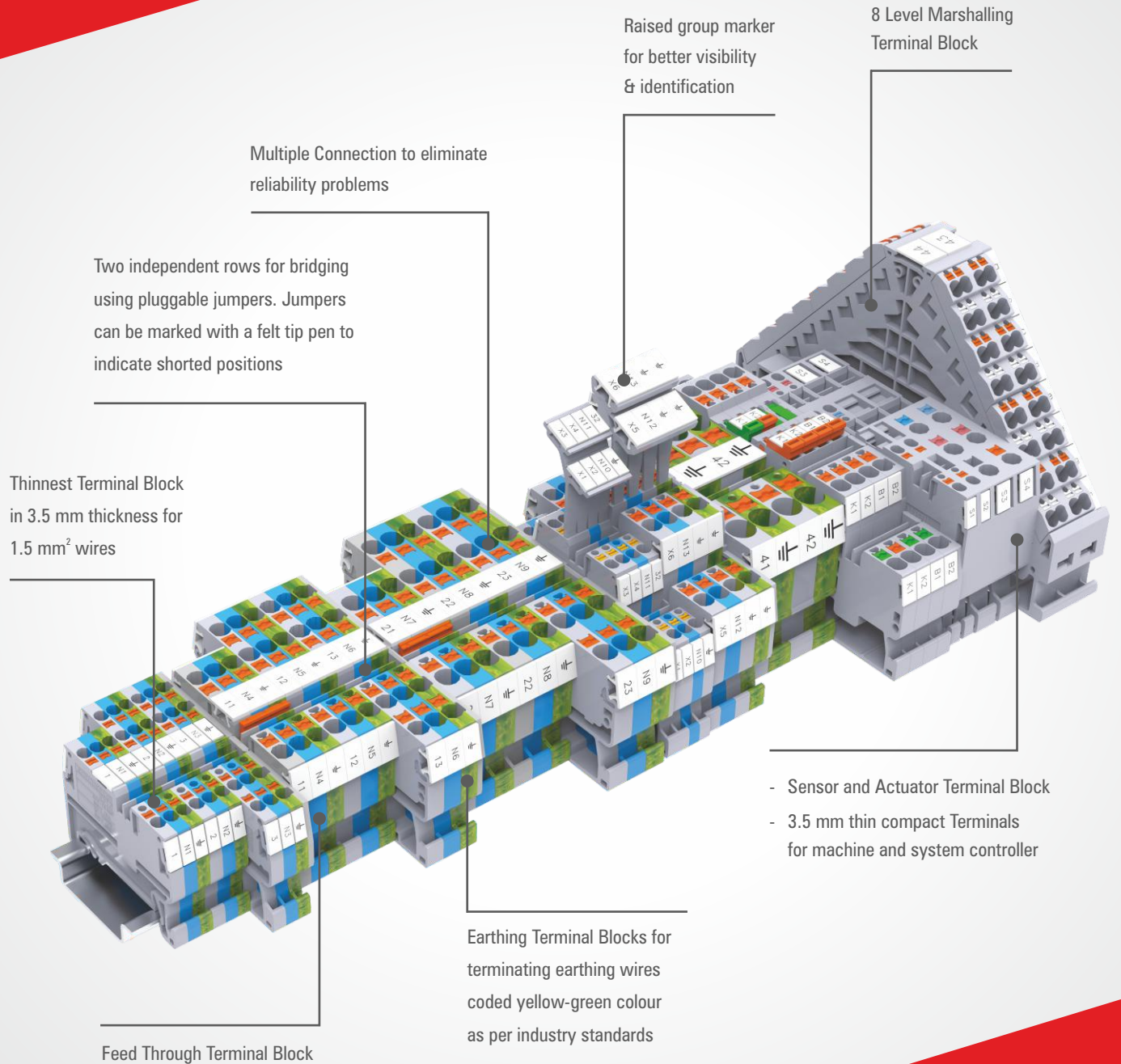
- Knife Disconnecting Terminal Block
- Labeling on the knife contact for easy identification

Two independent rows for bridging using pluggable jumpers. Jumpers can be marked with a felt tip pen to indicate shorted positions

## FEATURES

- > High quality stainless steel spring clamp
- > Ideal for severe vibration applications
- > Human effort independent gas tight connections
- > Twin Row Pluggable Jumpers

# CP Series PUSH-IN Terminal Blocks



Multiple Connection to eliminate reliability problems

Two independent rows for bridging using pluggable jumpers. Jumpers can be marked with a felt tip pen to indicate shorted positions

Thinnest Terminal Block in 3.5 mm thickness for 1.5 mm<sup>2</sup> wires

Raised group marker for better visibility & identification

8 Level Marshalling Terminal Block

- Sensor and Actuator Terminal Block
- 3.5 mm thin compact Terminals for machine and system controller

Earthing Terminal Blocks for terminating earthing wires coded yellow-green colour as per industry standards

Feed Through Terminal Block

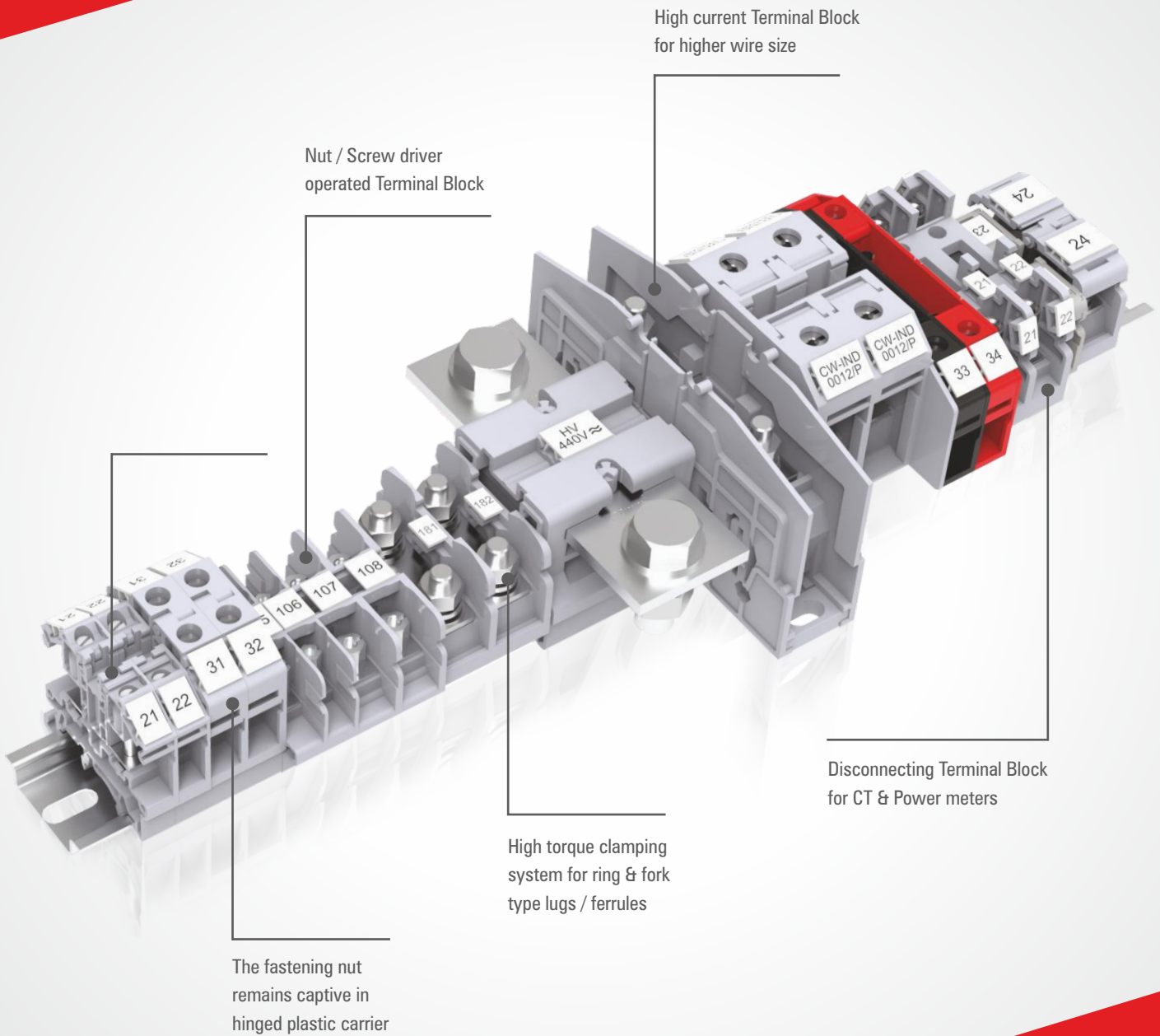
## FEATURES

- > Tool Free Wiring
- > 400% Faster connection
- > High pull-out forces
- > Twin Row Pluggable Jumpers



# STUD / BOLT TYPE

## Terminal Blocks



### FEATURES

- > Ideal for high current applications
- > Robust Connections for large size conductors
- > Suitable to use with Ring / Fork Lugs

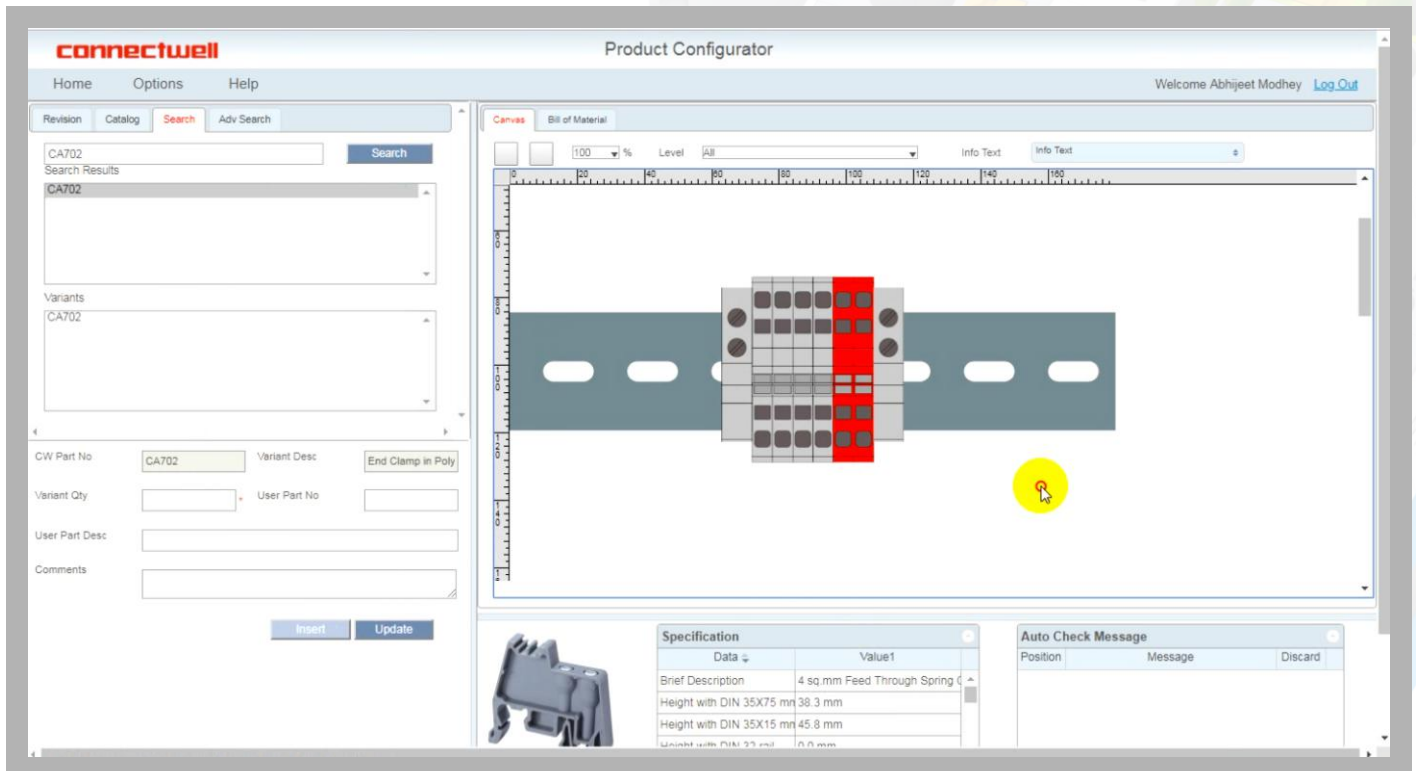
# VIRTUAL **config**

DESIGN

DOCUMENT

MANUFACTURE

DELIVER



- > Free online tool for Terminal Block configuration
- > Easy to use software, menu driven, no CAD licencing required
- > 2D & 3D output drawing generation
- > Complete BOM documentation
- > Standardized packaging for configured rail assemblies



<http://www.connectwell.com/Global/product-configurator.aspx>

# CONNECTWELL

## is available on ePLAN Data Portal

Get started on the path to improving the engineering design times, costs and quality for Electrical, Instrumentation & Control Systems

Quick Start

Flexible Layout

Consistency for Lively Exchange

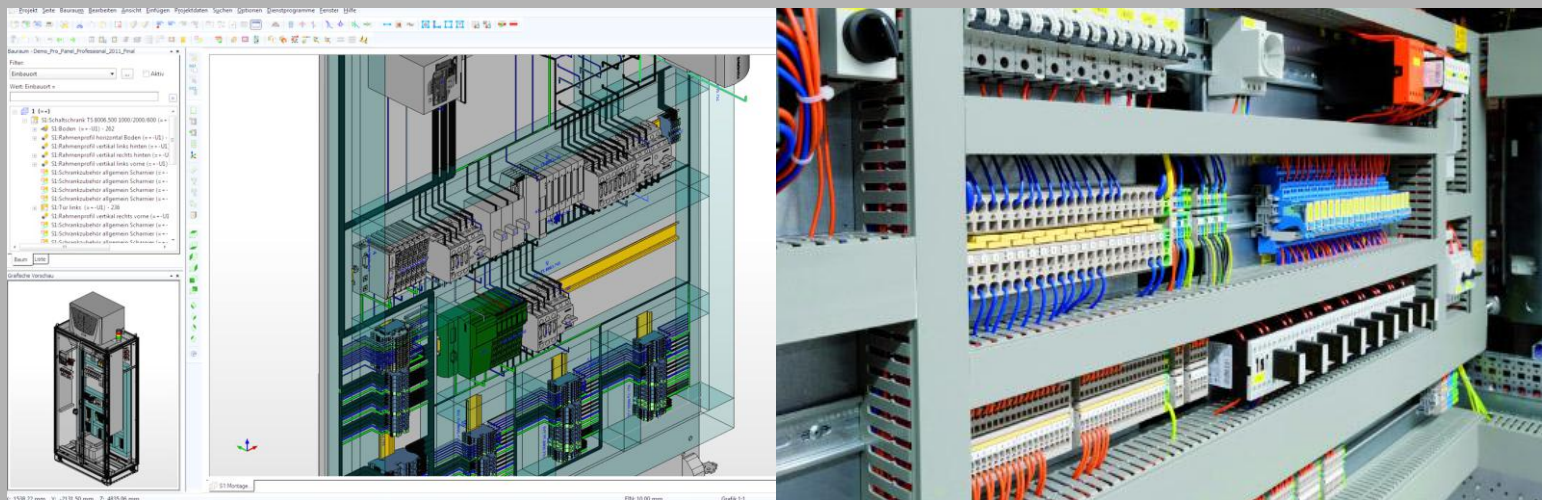
Safe Planning



Directly into (NC) production

Wiring made easy

Top Class Workflow



### What is ePLAN Data Portal ?

ePLAN software & services is one of the world leading service providers for developing CAx configuration and Mechatronics solutions.

ePLAN offers electrical engineering design software that provides innovative options for the planning, documentation and management of electrical design projects with nearly 7,80,000 device data from more than 200 manufacturers integrated within the ePLAN data portal.

# CERTIFICATIONS & APPROVALS

## connectwell

is an ISO 9001:2015, ISO 14001:2015, ISO 45001:2018 Company with products and systems approved by various global certification organizations



Cert. No.: 44 100 990789/01-E3  
TUV NORD



VDE Testing & Certification Institute



Underwriters Laboratories Inc



Canadian Standards Association



ATEX - IECEX



(IECEE) CB Scheme

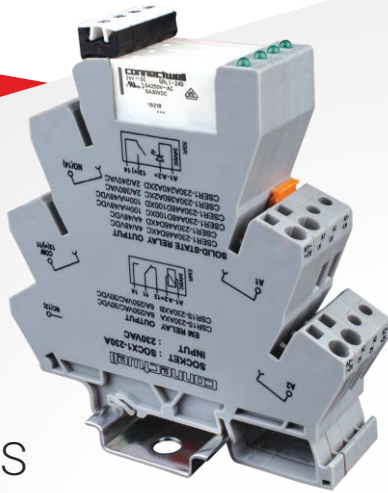


(IECEE) CE Scheme

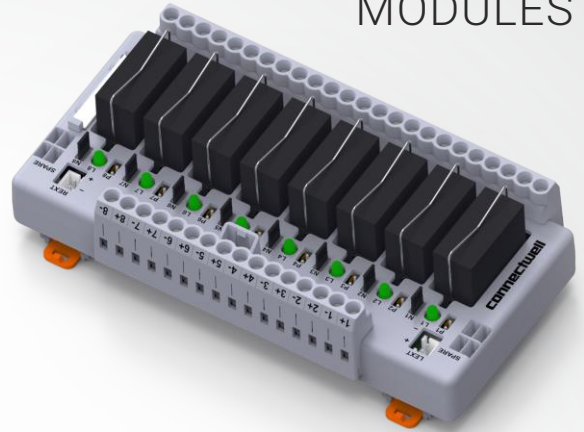


# PRODUCT RANGE

SLIM RELAYS



INTERFACE MODULES



Professional Tools



Switch-Mode Power Supplies



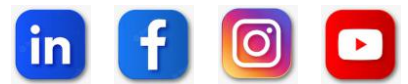
Marker Laser Printer



DIN Rail Socket and Switches



**connectwell**  
THE RIGHT CONNECTION



**CONNECTWELL INDUSTRIES PVT. LTD.**  
D-7, Phase 2, M.I.D.C., Dombivli - 421 204, India

[connect@connectwell.com](mailto:connect@connectwell.com)  
+91 251 7120 600 / 6762 600



[connectwell.com](http://connectwell.com)